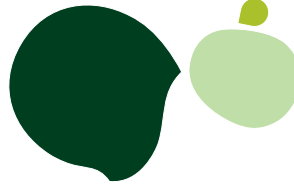


Sage ERP MAS 90

Sage ERP MAS 200

Sage ERP MAS 200 SQL

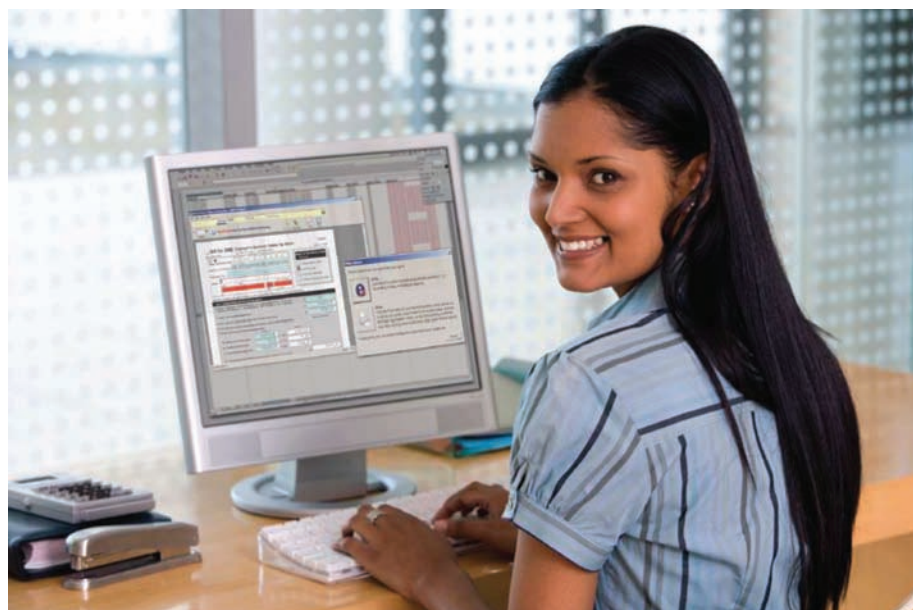


Available Modules

Sage ERP MAS 90, Sage ERP MAS 200, and Sage ERP MAS 200 SQL business management software offer a broad range of modules designed to meet the many needs of virtually any business. Combine modules to build an ERP system optimized for your business, and the resulting integrated system will be more powerful than the individual components. As your business continues to grow, you can add Sage ERP MAS 90 and 200 modules with confidence, knowing that your system is evolving and adapting as the best solution for your unique business needs. Go green with the powerful and efficient paperless office capabilities included with every system, and add specialized modules such as Direct Deposit* and Federal and State eFiling and Reporting to further reduce paper and increase timeliness of communications. These business tools are just one of the reasons why Sage ERP MAS 90 and 200 are recommended by more CPAs than any other midrange accounting solution.

Regardless of the platform you choose, there is a Sage ERP MAS 90 or 200 system that can meet your requirements. Sage ERP MAS 200 SQL* provides a superior ERP solution with robust features and functionality and the efficiency of Microsoft® SQL Server®. Offering scalability, flexibility, integration, and reporting using SQL Server, Sage ERP MAS 200 SQL leverages the ease of use, simplicity, and maturity of the Sage ERP MAS product line. Use the latest Windows® environments, the traditional local area network (LAN) and single-user environments, or wide area network (WAN) environments. The Internet- and intranet-compatible product line allows the flexibility to expand your system to accommodate greater numbers of users as your company grows, and provides more rapid transaction processing.

Sage ERP MAS 200 is ideal for multisite businesses and requires no additional remote access software. Designed to deliver industry-leading, benchmarked performance for fast, reliable data throughput and optimized for TCP/IP, this dynamic solution and the thin-client architecture provides fast, reliable network connections.



BENEFITS

- Accounting and Finance: General Ledger, Accounts Payable, Accounts Receivable, Fixed Assets,* Bank Reconciliation, Paperless Office, Federal and State eFiling and Reporting
- Distribution: Inventory Management, Sales Order, Purchase Order, Return Merchandise Authorization, Bar Code, Credit Card Processing, Sales Tax
- eCommerce: eBusiness Web Services, eBusiness Manager*
- Resource and Project Management: Abra HR, Job Cost*, Electronic Reporting, Payroll*, Direct Deposit*, Timecard, Federal and State eFiling and Reporting
- Manufacturing: Bill of Materials, Material Requirements Planning, Work Order*
- Business Intelligence and Integration Tools: Business Alerts, Business Insights Dashboard, Business Insights Explorer, Business Insights Reporter*, Crystal Reports®, Custom Office, Sage ERP MAS Intelligence, Visual Integrator
- Customer Relationship Management: SageCRM

*Not all modules are available for Sage ERP MAS 200 SQL.

Features

Financials

At the heart of every Sage ERP MAS 90, 200, and SQL 200 system are core accounting and financial modules: General Ledger, Accounts Receivable, Accounts Payable, Bank Reconciliation, and Fixed Assets.* Utilize the go-green Paperless Office capabilities, and add Federal and State eFiling and Reporting. No other business management software combines the depth, functionality, and ease of use that Sage ERP MAS 90 and 200 offers. These financial modules provide an accounting foundation for your business that optimizes your productivity.

Distribution

The Sage ERP MAS 90 and 200 distribution solution gives you the power to cut costs, build profits, and improve customer service and loyalty. The distribution modules include: Inventory Management, Sales Order, Sales Tax, Purchase Order, Return Merchandise Authorization, Bar Code, and Credit Card Processing. Among the long list of functions you can perform with the distribution solution is the ability to track inventory at multiple locations and maintain detailed sales histories for each customer, product, and product line.

Global eCommerce

eBusiness Web Services provides a powerful programming interface for integration with third-party applications and facilitates interoperability between disparate systems over the network, including the Internet. The eBusiness Manager* module for Sage ERP MAS 90 and 200 provides an affordable, out-of-the-box solution that can quickly and effectively bring your company online. The unique structure of this module allows additional functionality to be integrated by plugging in applets. The .order applet allows customers to securely order online. The .inquiry applet gives your customers instant access to their account status online. And the .store applet allows new customers to browse products and securely place orders online.

Resource and Project Management

Sage ERP MAS 90 and 200 offer a series of modules that can lead your company to increased efficiency and profitability. By adding Abra HR, Payroll*, Direct Deposit*, and Federal and State eFiling and Reporting to the financial modules, you'll have a complete solution for fully supporting one of your most vital assets: Your employees.

Manufacturing

The Sage ERP MAS 90 and 200 manufacturing modules provide detailed and accurate tracking and reporting throughout the entire manufacturing process—from the supplier to the manufacturing floor through a sale. The manufacturing solution offers a series of features that help maximize efficiency throughout all stages. This includes Bill of Materials, with the ability to create multilevel bills of materials and produce accurate and informative reports. And, when goods are finished, they are instantly available in Inventory Management or Sales Order for seamless transactions.

Business Intelligence/Integration Tools

Designed to increase productivity and enhance functionality, these easy-to-use tools create an all-encompassing information management system for your business. Business Insights Explorer, designed for any user to quickly generate a report, view customer information, or provide executives with answers to “must-know” inquiries. Specifically for high-level managers such as CEOs, CFOs, and sales directors, Business Insights Dashboard enables you to view vital company information. Sage ERP MAS Intelligence automatically consolidates data from multiple companies, divisions, and data sources for in-depth analysis. At the click of a button, Reporting Trees allow you to model a reporting structure and view information about your organization in many different ways. Plus, Business Alerts is another way to keep your company, customers, and vendors “in the know.” For instance, if inventory drops below a certain point, your purchasing agent will be notified immediately with an email message.

Customer Relationship Management

By adding a customer relationship management (CRM) solution to Sage ERP MAS 90, 200, or 200 SQL, your company can make significant strides in sales performance and customer service. CRM applications increase efficiency in customer-centric processes, including tracking and communicating with customers and prospective customers. Adding SageCRM to your Sage ERP MAS system allows you to provide superior customer service by providing you with the ability to communicate more effectively, collaborate better internally, and compete in today's marketplace.