

# Sage ERP MAS 500

## Why Upgrade to Version 7.4?

Upgrades to an ERP system can be costly, time consuming, and disruptive. What is there about Sage ERP MAS 500 that is compelling enough to make the accounting office want to go through all of that?

Let's start by looking at some of the things your business does every day.

- Do you receive customer payments?
- Do your customers ever pay an amount that differs from the invoice amount?
- Do you ever spend time trying to track down an unapplied payment?
- Have you ever spent time trying to reconcile a payment to a customer account only to have an amount that you cannot apply?
- Do your customers ever get frustrated because you keep them on hold while you try to track down a payment?
- Have you ever applied an amount to the wrong invoice, just to have a place to apply it?
- Have you ever had to issue a customer refund?
- Have you ever wished you didn't have so many steps to go through to issue a refund?
- Do you use Business Insights Explorer to view and drill down on transaction information?
- Ever wish you could export the data on your screen just the way it is to Excel or PDF?
- Ever wish the data loaded faster in the views?

If you answered "Yes" to two or more of the previous questions, Version 7.4 is for you!

## New Ability to Create and Track Negative Invoices

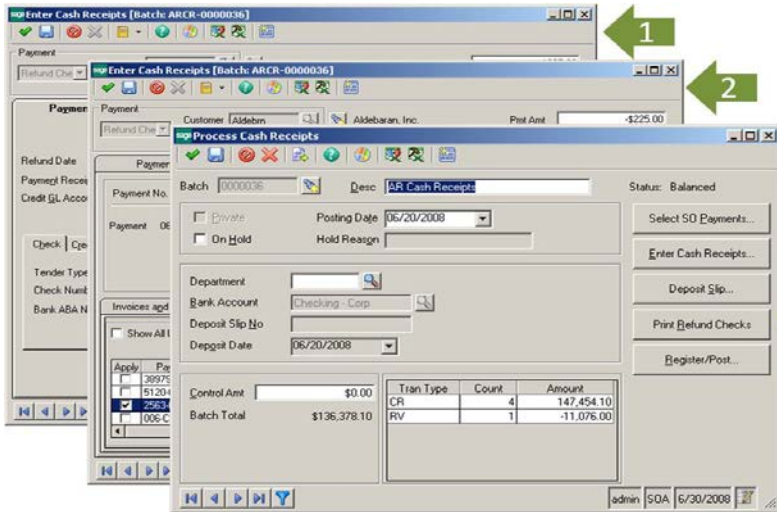
Customers do not always submit payments that tie neatly to existing invoices. How do you apply and track those payments in a way that makes sense to you and to them?

In version 7.4 of Sage ERP MAS 500, users now have the ability to apply overpaid amounts to an existing invoice and track the balance using the original invoice number, whether using Accounts Receivable Enter Cash Receipts or Apply Payments and Memos, and whether applying Cash, a Customer Payment, a Credit Memo or another overpaid invoice's negative balance. The overpaid amount appears with the original invoice number in all the expected places such as:

- Print or Re-Print Invoices
- Customer Status Ledger tab
- Customer Statements
- Aged Receivables
- AR Trial Balance
- Explore Invoice Applications
- Explore Customer Payments Applications



## New Process to Issue Refund Checks from Cash Receipts



No business wants to have to issue a refund check. Nonetheless, there are instances when that is the only correct action. A complex process that required multiple steps in multiple modules only adds to the desire to avoid the task.

Version 7.4 simplifies the process. Process Cash Receipts has been enhanced to allow the creation of a customer return from start to finish, including printing the check, all from one task. Refund checks use the customer information without the need to create a vendor or a voucher – saving steps and increasing productivity.

## Business Insights Improvements

The ability to quickly access and analyze the data retained in your ERP system is key to running an efficient and effective business. Key performance and usability enhancements in Sage ERP MAS 500 version 7.4 improve your ability to do just that.

### Performance Improvements

In order to reduce the time it takes to return selection and filtered results in a Business Insights Explorer view, we:

- Updated our controls
- Improved the Select Engine
- Optimized the metadata

The impact is greatly improved performance in returning just the information you need.

### New Top “N” Option

Sometimes you just need to see the top performers at a glance. With the new Maximum Rows setting in Maintain Business Insights Views / Context Menus you can limit the results returned for a quick view of your top performers ... be it customers, items, salespeople or any view that can be ranked.



### New Export Options

Business Insights Explorer provides an extremely versatile tool to arrange and analyze data. Nonetheless, many find it convenient to export the data to other tools like Microsoft® Excel® for further analysis. Previous to version 7.4, the export included all data from the initial query. This fact meant all of the filtering, sorting and analysis performed prior to the export had to be repeated again in Excel.

The new export options in version 7.4 provide you with a choice. You can now export all of the data just as you could in prior versions, or, you can export just the data in the view as it appears in Sage ERP MAS 500. The second option reduces the duplication of effort and gets you to your desired results more quickly.

Another new option is the option to export in PDF format. This export also includes the options to export all data or just the visible data.